

Obrni, okreni...
uvrnuto jeste
samo ako
flipneš

Miloš Bajčetić, *Reticulum*
Medicinski fakultet
Univerzitet u Beogradu

Obrni, okreni...
uvrnuto jeste
samo ako
flipneš

moodle™
CROATIA 2023

Izokrenut... skoro pa flipnut amfitetatar

- 498 studenata prve godine studija (školska 2022/2023)
- Klasična nastava – 333; (P, MV & S)
- Onlajn nastava (FC) – 165 (P, MV & FC)
- Ulazni (DG) test – oktobar 2022
- 3 redovna kolokvijuma
 - K01 – decembar 2022. (30 pitanja);
 - K02 – mart 2023. (20 pitanja);
 - **K03 – maj 2023. (20 pitanja).**
- 2 Testa retencije znanja
 - **R01 – februar 2023. (30 pitanja);**
 - **R02 – jun 2023. (30 pitanja).**





Moji kursevi

Pregled kurseva

Svi ▾

Pretraga

Sortiraj prema poslednjem pristupu ▾

Spisak ▾



IAS - Histologija i embriologija - Onlajn amfiteatar 2022/2023
Histologija i embriologija 2022/2023

0% završeno



IAS - Histologija i embriologija 2022/2023 Seminarske grupe
Histologija i embriologija 2022/2023

1% završeno



★ IAS - Histologija i embriologija 2023 B4
Histologija i embriologija 2022/2023

1% završeno



★ IAS - Histologija i embriologija 2023 A4
Histologija i embriologija 2022/2023

0% završeno



Microscope



ISE IT

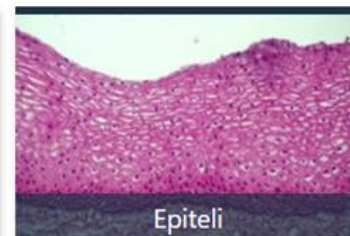
Ordinacija dr Hausa i drugi forumi



Provere znanja (testovi)



Citologija



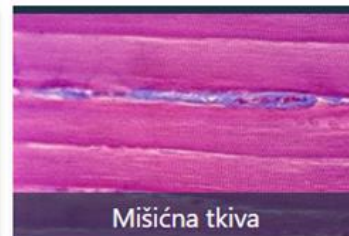
Epiteli



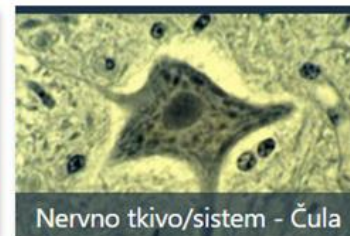
Veziva



Krv/hematopoeza -
Limfatični organi



Mišićna tkiva



Nervno tkivo/sistem - Čula



Embriologija



Cirkulatorni sistem



Endokrini sistem



Digestivni sistem



Respiratorni sistem



Urogenitalni sistem

Kalendar

jun 2023.

Pon	Uto	Sre	Čet	Pet	Sub	Ned
			1	2	3	4
5	6	7	8	9	10	11
12	13	14	15	16	17	18
19	20	21	22	23	24	25
26	27	28	29	30		

Ceo kalendar
Uvoz ili izvoz kalendara

Histologija 1



Napredak: 0%
Predite mišem preko ili dodirnite traku za više informacija.

Pregled polaznika

Histologija 2



CBM (certainty based marking)

Nivo sigurnosti	C1	C2	C3
Br. bodova za tačan odgovor	1	2	3
Kazneni poeni (netačan odgovor)	0	-2	-6

Kolokvijumi

Group Statistics

	VidNastave	N	Mean	Std. Deviation	Std. Error Mean
K01	KlasicnaNastava	331	21.4532	4.65345	.25578
	OnlajnNastava	164	21.4939	5.01470	.39158
K02	KlasicnaNastava	328	12.1220	3.54228	.19559
	OnlajnNastava	158	12.6456	3.20842	.25525
K03	KlasicnaNastava	307	12.5733	3.82676	.21840
	OnlajnNastava	153	13.4183	3.51803	.28442

Independent Samples Test

		Levene's Test for Equality of Variances		t-test for Equality of Means						
		F	Sig.	t	df	Sig. (2-tailed)	Mean Difference	Std. Error Difference	95% Confidence Interval of the Difference	
									Lower	Upper
K01	Equal variances assumed	2.230	.136	-.089	493	.929	-.04073	.45606	-.93679	.85533
	Equal variances not assumed			-.087	304.392	.931	-.04073	.46772	-.96110	.87964
K02	Equal variances assumed	2.648	.104	-1.573	484	.116	-.52362	.33289	-1.17771	.13047
	Equal variances not assumed			-1.628	339.332	.104	-.52362	.32157	-1.15614	.10890
K03	Equal variances assumed	1.719	.191	-2.291	458	.022 *	-.84501	.36884	-1.56984	-.12018
	Equal variances not assumed			-2.356	327.543	.019	-.84501	.35860	-1.55046	-.13956

Testovi retencije (R01 & 02)

Group Statistics

	VidNastave	N	Mean	Std. Deviation	Std. Error Mean
R01_SM	KlasicnaNastava	333	11.9946	4.08504	.22386
	OnlajnNastava	165	13.1103	4.26823	.33228
R01_CBM	KlasicnaNastava	333	-11.3892	23.53097	1.28949
	OnlajnNastava	165	-2.8388	20.45683	1.59256
R02_SM	KlasicnaNastava	333	13.2372	4.48769	.24592
	OnlajnNastava	165	14.3636	4.24708	.33063
R02_CBM	KlasicnaNastava	333	-.5916	27.15919	1.48831
	OnlajnNastava	165	7.3273	22.19541	1.72791

Independent Samples Test

		Levene's Test for Equality of Variances		t-test for Equality of Means						
		F	Sig.	t	df	Sig. (2-tailed)	Mean Difference	Std. Error Difference	95% Confidence Interval of the Difference	
									Lower	Upper
R01_SM	Equal variances assumed	.440	.507	-2.826	496	.005	-1.11571	.39476	-1.89132	-.34010
	Equal variances not assumed			-2.785	314.638	.006	** -1.11571	.40065	-1.90401	-.32741
R01_CBM	Equal variances assumed	2.491	.115	-3.981	496	.000	-8.55040	2.14787	-12.77044	-4.33036
	Equal variances not assumed			-4.173	370.800	.000	** -8.55040	2.04915	-12.57982	-4.52098
R02_SM	Equal variances assumed	.144	.704	-2.683	496	.008	-1.12640	.41981	-1.95122	-.30158
	Equal variances not assumed			-2.734	343.691	.007	** -1.12640	.41207	-1.93689	-.31591
R02_CBM	Equal variances assumed	5.838	.016	-3.246	496	.001	-7.91886	2.43954	-12.71196	-3.12577
	Equal variances not assumed			-3.472	391.238	.001	** -7.91886	2.28052	-12.40246	-3.43526