

Redefining Education with Project-Based Learning Supported with Moodle

Sanja Jedrinović

Agenda +

1. About us
2. Overview of Project-Based Learning (PBL)
3. Implementing PBL at the University of Ljubljana
4. Integration of Moodle as a Platform
5. PBL Activities Supported by Moodle
6. Evaluation of the Implementation

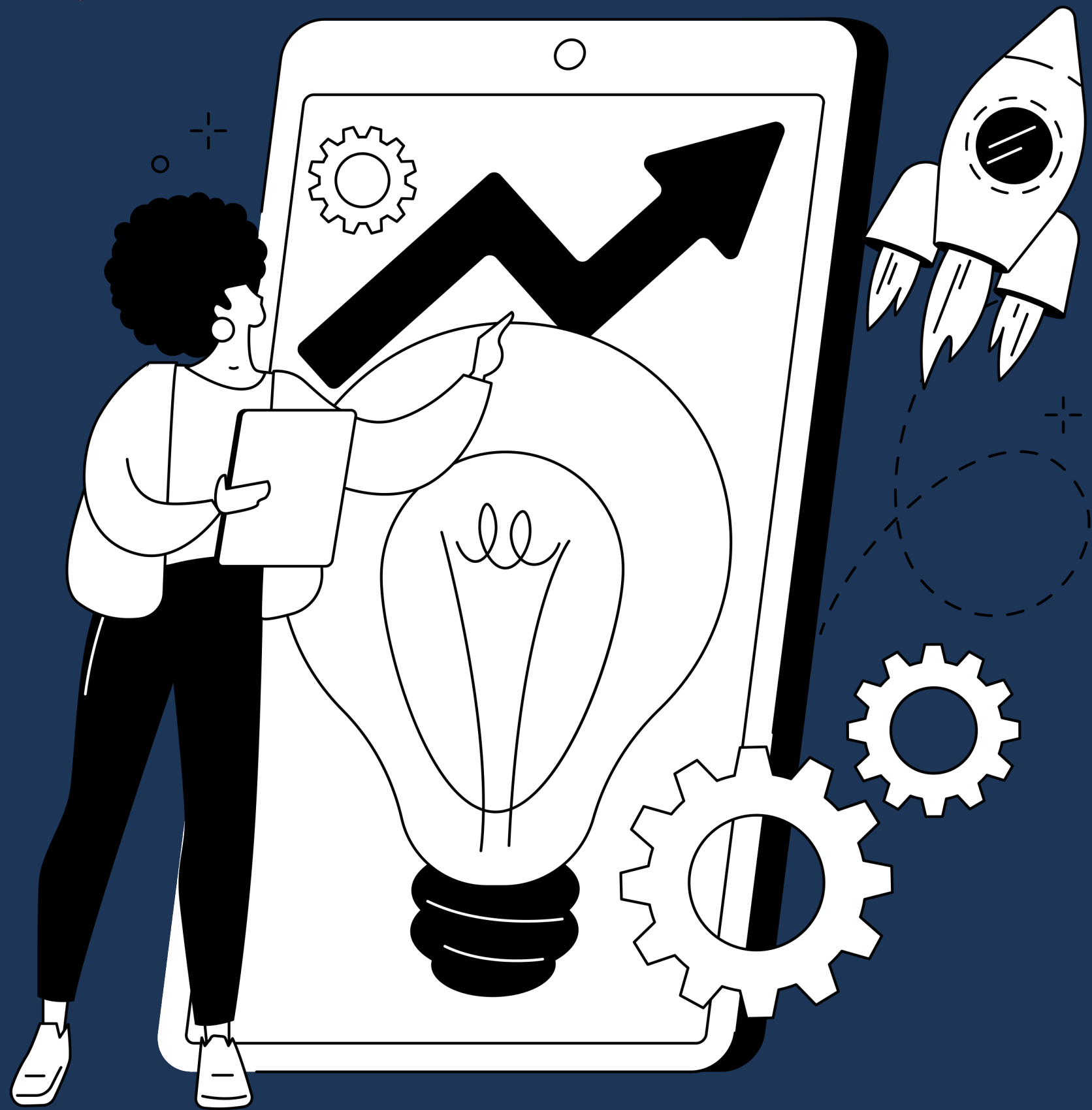


About Us

We are offering support to UL teachers:

- Dissemination activities
- Trainings
- Consultations
- Research and development:
 - pilot renewals
 - multipliers
 - one-year projects to introduce innovative pedagogies
 - integrated study environment





What is PBL?

- Student-centered instructional approach
- Involves students working on real-world projects to solve authentic problems



Features of PBL



01

Active learning

Students actively engage in the learning process through hands-on projects.

02

Critical thinking

PBL promotes problem-solving, analysis, and evaluation skills.

03

Collaboration

Students work in teams, fostering communication and teamwork skills.

04

Authenticity

PBL connects learning to real-world contexts, making it more meaningful for students.

05

Inquiry-based

PBL encourages students to ask questions, explore, and discover knowledge.





Benefits Of PBL



Application of knowledge



Preparation for the future



Skill development



improvement of
communication and
collaboration skills



Engagement and
motivation



Personalized learning

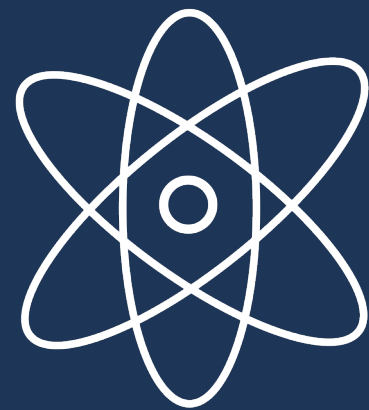
Implementing PBL at the University of Ljubljana

- Recognizing the need for more engaging and practical learning experiences for students.
- Aligning with the university's commitment to student-centered education.
- Responding to the evolving demands of the job market, which requires students to possess practical skills and the ability to apply knowledge in real-world contexts.





Our approach on implementing PBL in study process



Integrate project-based learning into the curriculum across various disciplines.



Utilize technology, such as Moodle, to support and enhance PBL activities.



Evaluate the outcomes of PBL implementation, including student satisfaction, skill development, and academic performance.



Share insights and best practices with other educators and institutions seeking to adopt PBL.



Integration of Moodle as a Platform



Moodle's versatility, collaboration features, project management tools, and assessment options make it a suitable platform for implementing and supporting project-based learning initiatives.





Case studies



Creation of learning modules in the form of micro MOOCs by students, future teachers



Author: doc. dr. Črtomir Podlipnik

Faculty: Faculty of Chemistry and Chemical Technology

Subject field: chemistry

Project phases:

- project planning
- introduction to the use of the tools
- creating learning content
- publishing and delivering the courses

Use of Moodle:

- resource creation
- microMOOC launch
- microMOOC implementation



The screenshot shows a Moodle course page for 'Prezemi vlogo forenzika'. The page content includes:

- Section Header:** 'Prezemi vlogo forenzika' with a subtitle 'Tečaj na temo učenja na primeru daktiloskopije v obliki microMOOC aktivnosti.'
- Activity:** 'DOBRODOŠLI!' with a 'Mark as done' button.
- Image:** A cartoon illustration of a detective in a blue uniform and cap, standing next to a sign that says 'Prezemi vlogo FORENZIKA! VPIŠI SE ZDAJ!'.
- Section Header:** 'Obvestila' with a 'Mark as done' button.
- Text:** 'Dobrodošli na strani tečaja Prezemi vlogo forenzika, ki se ukvarja s področjem učenja na primeru daktiloskopije. Na tem mestu lahko postavljate vprašanja, dodajate nove informacije, ki bi utegnile biti zanimive tudi za preostale udeležence, oziroma razvijete diskusijo na temo tečaja z drugimi udeleženci.'
- Section Header:** 'Ključne besede in besedne zveze v povezavi z daktiloskopijo' with a 'Mark as done' button.
- Text:** 'Kadarkoli lahko vključite geslo, za katero menite, da ima mesto v slovarju in bi lahko pomagalo ostalim udeležencem tečaja.'

Promoting the development of students' digital competences through experimental and project-based learning with the possibility of distance learning



Author: prof. dr. Vesna Ferik Savec, asist. Katarina Mlinarec

Faculty: Faculty of Education

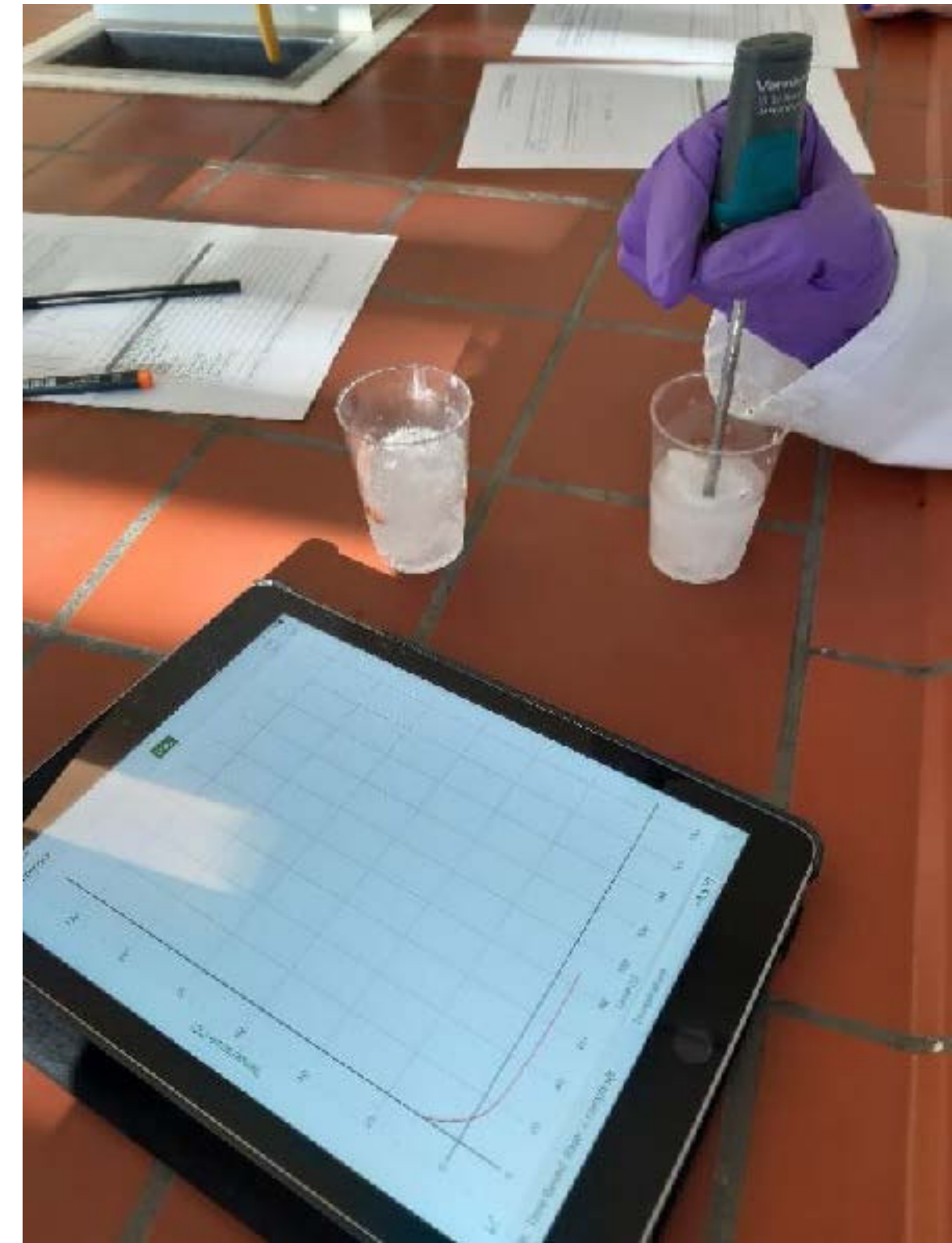
Subject field: educational sciences, chemistry

Project phases:

- planning experimental work
- testing planned experimental work
- presentation of the experimental work to be undertaken

Use of Moodle:

- resource creation and sharing
- submission of project plan
- submission of project results
- evaluation



Interdisciplinary development of educational games

Author: prof. dr. Jože Rugelj, asist. dr. Matej Zapušek

Faculty: Faculty of Education

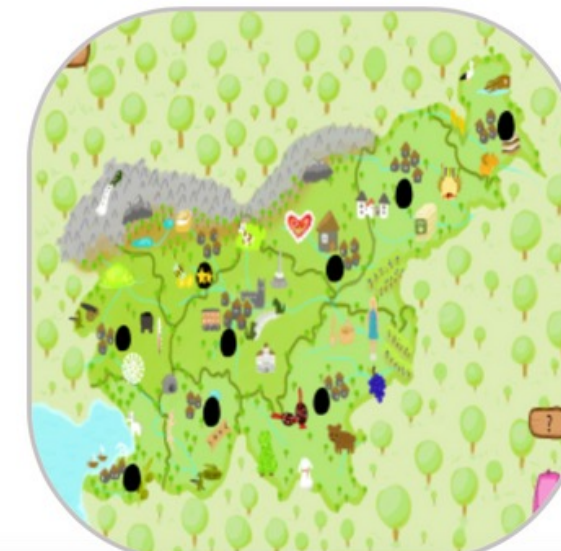
Subject field: educational sciences, computer science

Project phases:

- specification
- analysis
- design
- development
- implementation
- evaluation

Use of Moodle:

- resource creation and sharing
- submission of project plan
- submission of project results and evaluation



Collection, analysis and digital presentation of Slovenian legal-archaeological material

Author: prof. dr. Marko Kambič, asist. Vid Žepič

Faculty: Faculty of Law

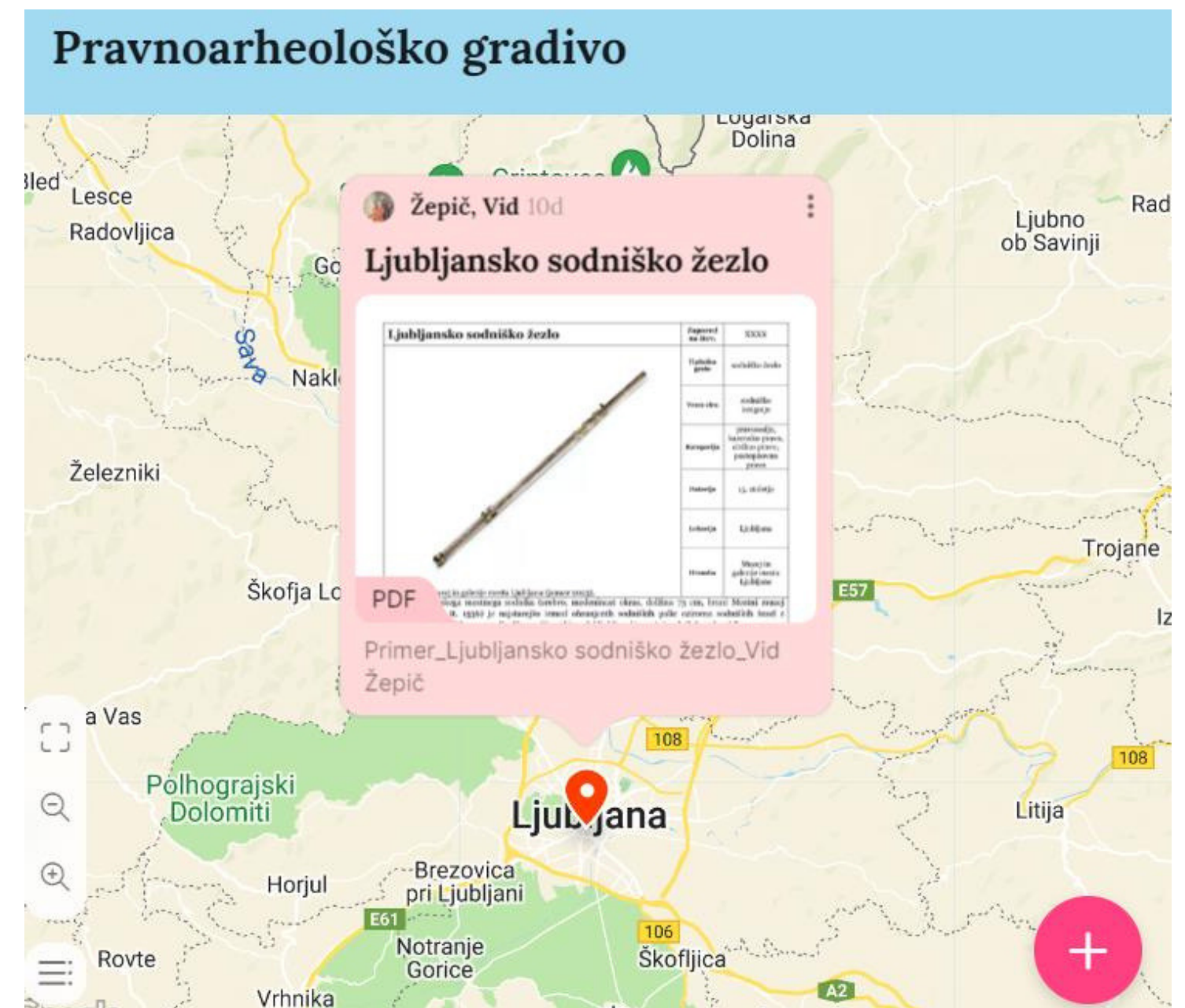
Subject field: law

Project phases:

- planning and research
- design and development
- implementation
- presentation and sharing

Use of Moodle:

- submission of project results (Padlet)
- evaluation and monitoring



Addressing staffing challenges through applied field research and the application of international research results

Author: prof. dr. Andrej Kohont

Faculty: Faculty of social sciences

Subject field: sociology

Project phases:

- preparation prior to fieldwork in lectures and seminars, benchmarking
- discussions (buzz groups, pro-contra)
- visit to a selected company, selection of the topic of the case study
- theoretical placement of the problem in the context of the course
- preparation of an analytically applicable group solution to the selected problem
- group presentation

Use of Moodle:

- submission of project results
- evaluation and monitoring



Group design of physical exercise programmes



Author: dr. Aleš Dolenc

Faculty: Faculty of sports

Subject field: sports

Project phases:

- planning and research
- design and development
- implementation
- presentation and sharing

Use of Moodle:

- resource repository
- communication
- choice of topic
- peer evaluation (Moodle workshop)



Alternative sustainable sources of dietary protein

Author: prof. dr. Breda Jakovac Strajn

Faculty: Veterinary Faculty

Subject field: veterinary

Project phases:

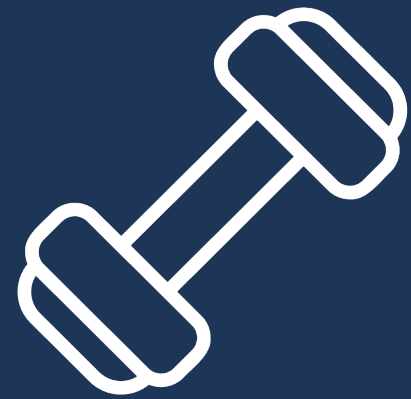
- forming groups
- choice of themes
- formation of expert groups (by subject areas)
- project work in expert groups
- project work in core groups
- reviewing results, giving feedback, making corrections
- presentation of projects and snowball discussion

Use of Moodle:

- group and theme choice
- submission of project results
- evaluation and monitoring



Summary of Moodle in support of PBL



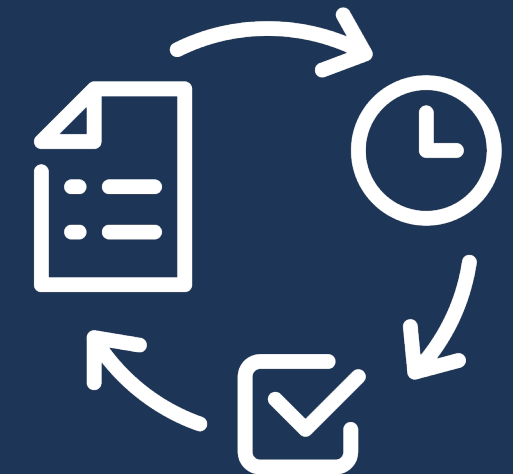
Robust Learning Management System



Seamless Collaboration



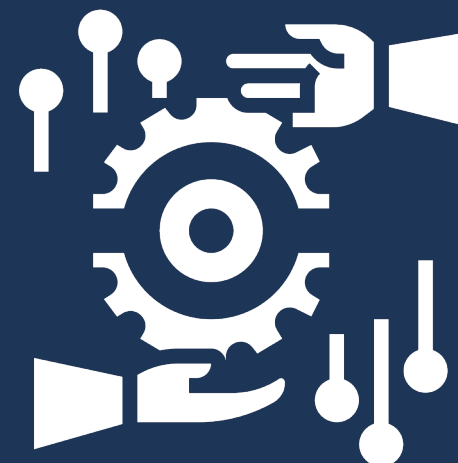
Assessment and Feedback



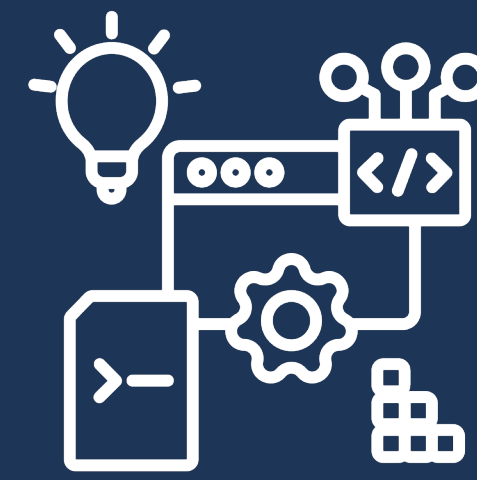
Centralized Project Management



Resource Sharing



Flexibility and Customization



Integration with Other Tools

Thank You



sanja.jedrinovic@uni-lj.si



digitalna@uni-lj.si



<https://digitalna.uni-lj.si>



www.facebook.com/centerdigitalnaul



www.instagram.com/centerdigitalnaul/