

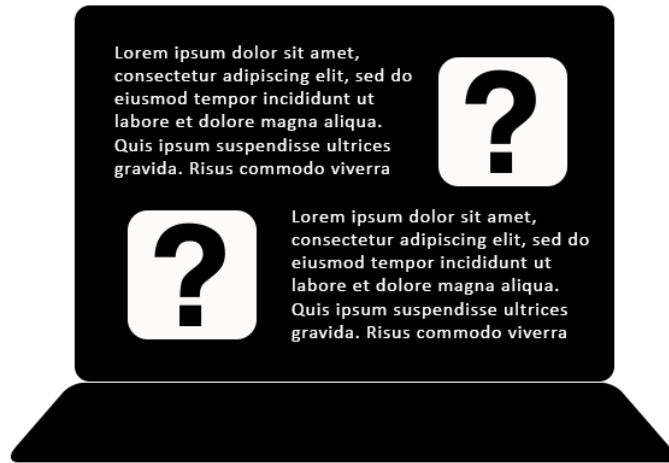
Dani e-infrastrukture – Srce DEI 2023
Konferencija projekta HR-ZOO
28. – 30. ožujka 2023.

Što kada slika ne govori nijednu riječ?

Jasmina Plavac, Sveučilišni računski centar

Kome treba opisati slike i koje?

Slijepi i slabovidne osobe za pristup digitalnim sadržajima koriste čitače ekrana (softver poput NVDA) – „slušaju” digitalne sadržaje.



Slike koje nose dio ili cijelo značenje koje želimo prenijeti našim člankom, dokumentom, edukacijskim materijalom, a značenje nije obuhvaćeno tekstom uz koji se slika nalazi, trebaju imati tekstualni opis koji čitači ekrana znaju pročitati.

Platforma vs. urednik

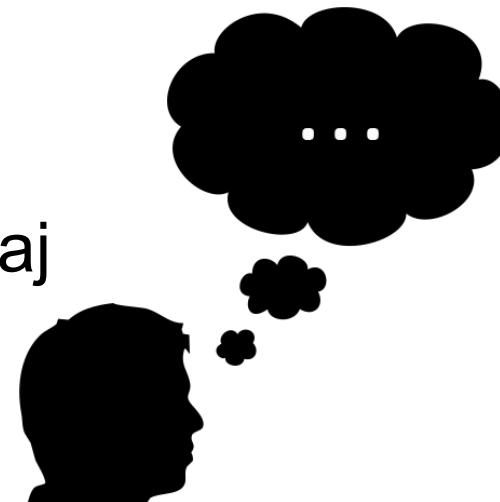


Platforme/sustavi na kojima se sadržaj izrađuje i prezentira

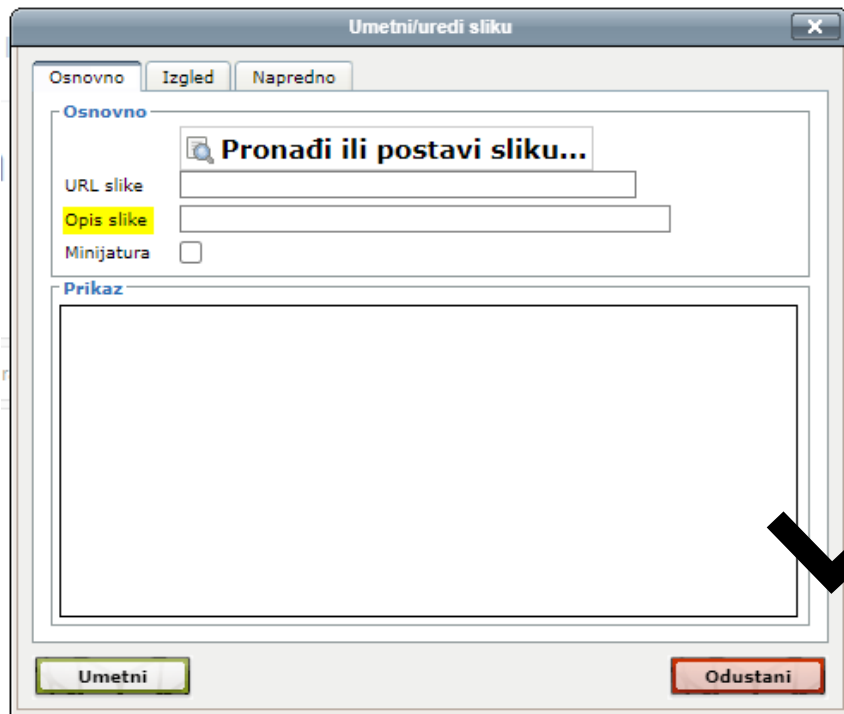
- olakšavaju uredniku ispravno smještanje opisa slike u HTML ili drugu strukturu dokumenta te
- omogućavaju čitačima ekrana dohvaćanje opisa slike,

ali najvažniji dio u postupku omogućavanja pristupačnosti slika odrađuje osoba koja izrađuje sadržaj i zato je bitna njena osposobljenost i motiviranost.

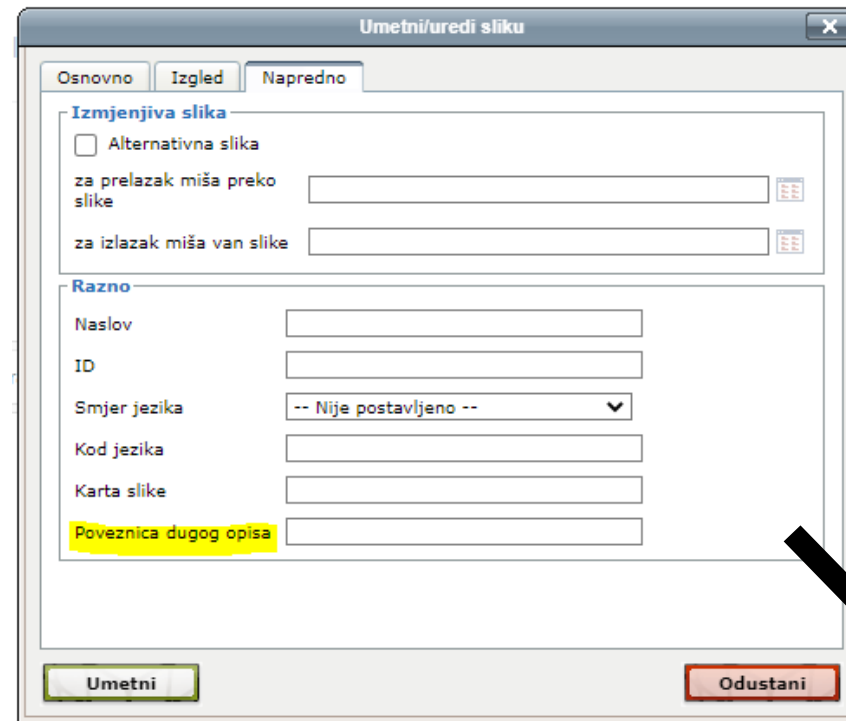
- Ovo je izazovniji dio.



Merlin



Opis slike (`alt`) treba sadržavati kratki opis slike.

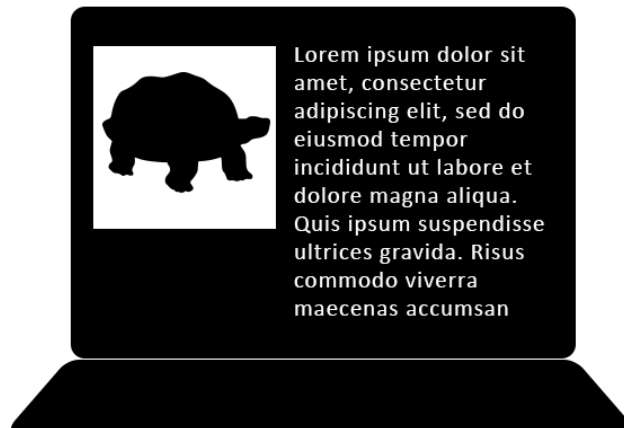


Poveznica dugog opisa (`longdesc`) sadrži URL do stranice ili datoteke s dugim opisom slike.

Primjeri opisa slika i gdje staviti opise

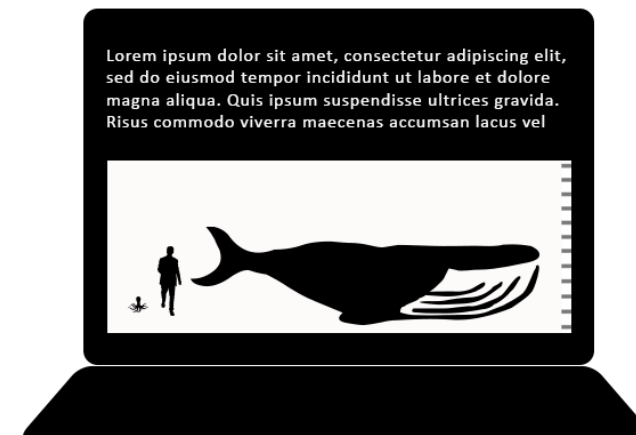


Slika je **dekorativna** – nije potreban opis (HTML oznaka je **alt=""**)



Slika je **jednostavna**, uz sliku se daje opis i smješta u polje Opis (u HTML kodu je to oznaka alt). Sadrži do ~140 znakova.

Na primjer: **alt="slika prikazuje kopnenu kornjaču"**

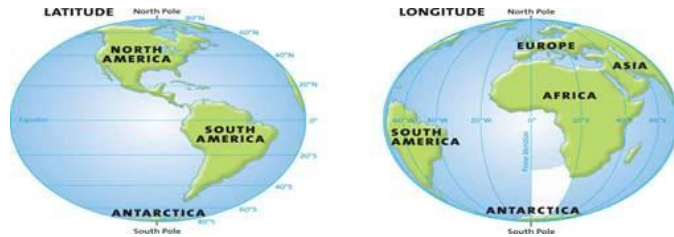


Slika je **kompleksnija** jer prikazuje odnose u veličini živih bića. Potrebno je kreirati drugu stranicu ili dokument, može i običan .txt dokument, i postaviti na poslužitelj. Na toj stranici/datoteci treba opisati sliku, a njenu adresu staviti u polje Poveznica na dulji opis (u HTML kodu je to oznaka **longdesc**).

Pomagalo za odluku:

<https://www.w3.org/WAI/tutorials/images/decision-tree/>

Primjer kompleksnije slike



© Harcourt School Publishers 2008

Description 1: *(Maps may be decorative, or simple locator maps, and may only require a short description.)*
Two global maps highlight lines of latitude and longitude.

Description 2: *(If the map is used to illustrate a concept and help define new terms, describe the lines of latitude and longitude and explain how they look on the map (horizontal, vertical), and the corresponding degrees.)*
Two global maps are shown side by side. One global map highlights lines of latitude. These lines are horizontal and are labeled zero degrees at the Equator in the middle of the globe. From the Equator, the lines go from 20 degrees to 80 degrees in both directions, to the North and South poles. The other global map highlights lines of longitude. These lines are vertical and are labeled zero degrees at the Prime Meridian in the middle of the globe. From the Prime Meridian, the lines go from 20 degrees to 80 degrees, east and west.

Description 3: *(If the map is used as part of a geography lesson and the land and water are relevant, describe the labeled areas, including their relationship and distance to each other when relevant.)*
Two global maps are shown side by side. One global map highlights lines of latitude. These lines are horizontal and are labeled zero degrees at the Equator in the middle of the globe. From the Equator, the lines go from 20 degrees to 80 degrees in both directions, to the North and South poles. North America, South America, and a portion of Antarctica are shown. The other global map highlights lines of longitude. These lines are vertical and are labeled zero degrees at the Prime Meridian in the middle of the globe. From the Prime Meridian, the lines go from 20 degrees to 80 degrees east and west. Africa, Europe, and portions of Asia, Antarctica, and South America are shown.

Izvor: <http://diagramcenter.org/specific-guidelines-e-2.html#62>

Primjer kompleksnije slike

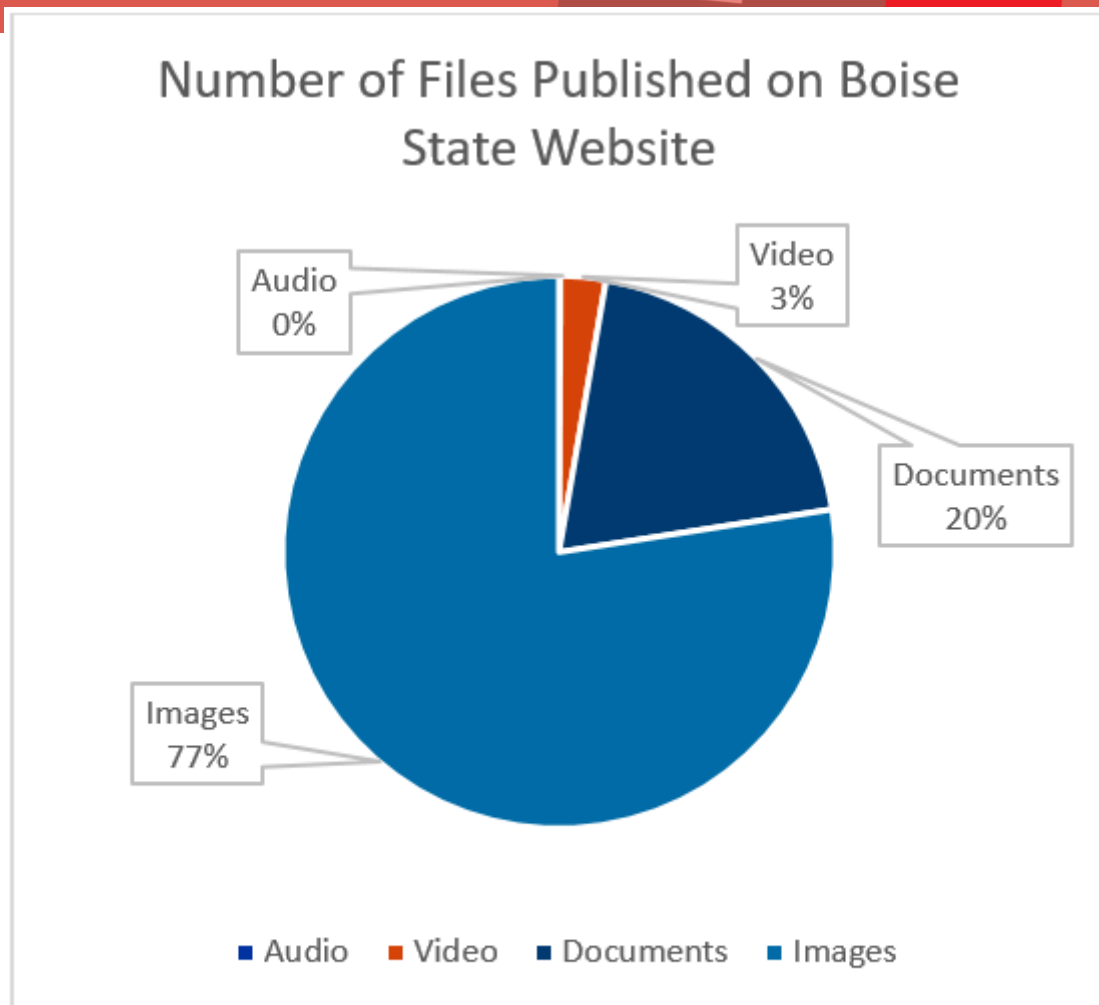


Figure 3: Number of Files Published on Boise State Website – 0% Audio, 3% Videos, 20% Documents, and 77% Images

alt="Pie chart of Files published on BoiseState.edu - 0% audio files, 3% video files, 20% documents, 77% images"

Izvor:
<https://www.boisestate.edu/webguide/2021/02/05/describing-data-and-graphs/>

Primjer kompleksnije slike

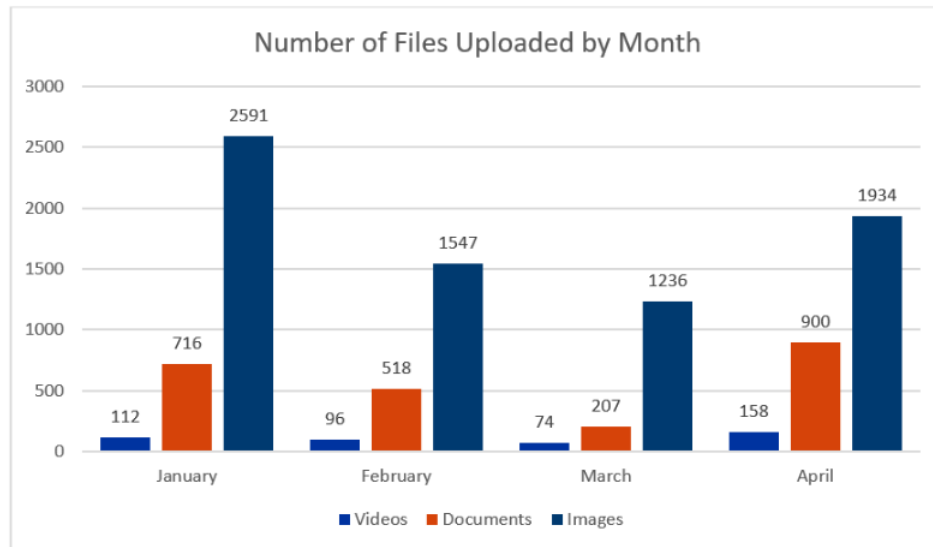


Figure 4

Table 1 - Data Figure 4

Total number of video, document, and image files uploaded to the website during the months of January through April.

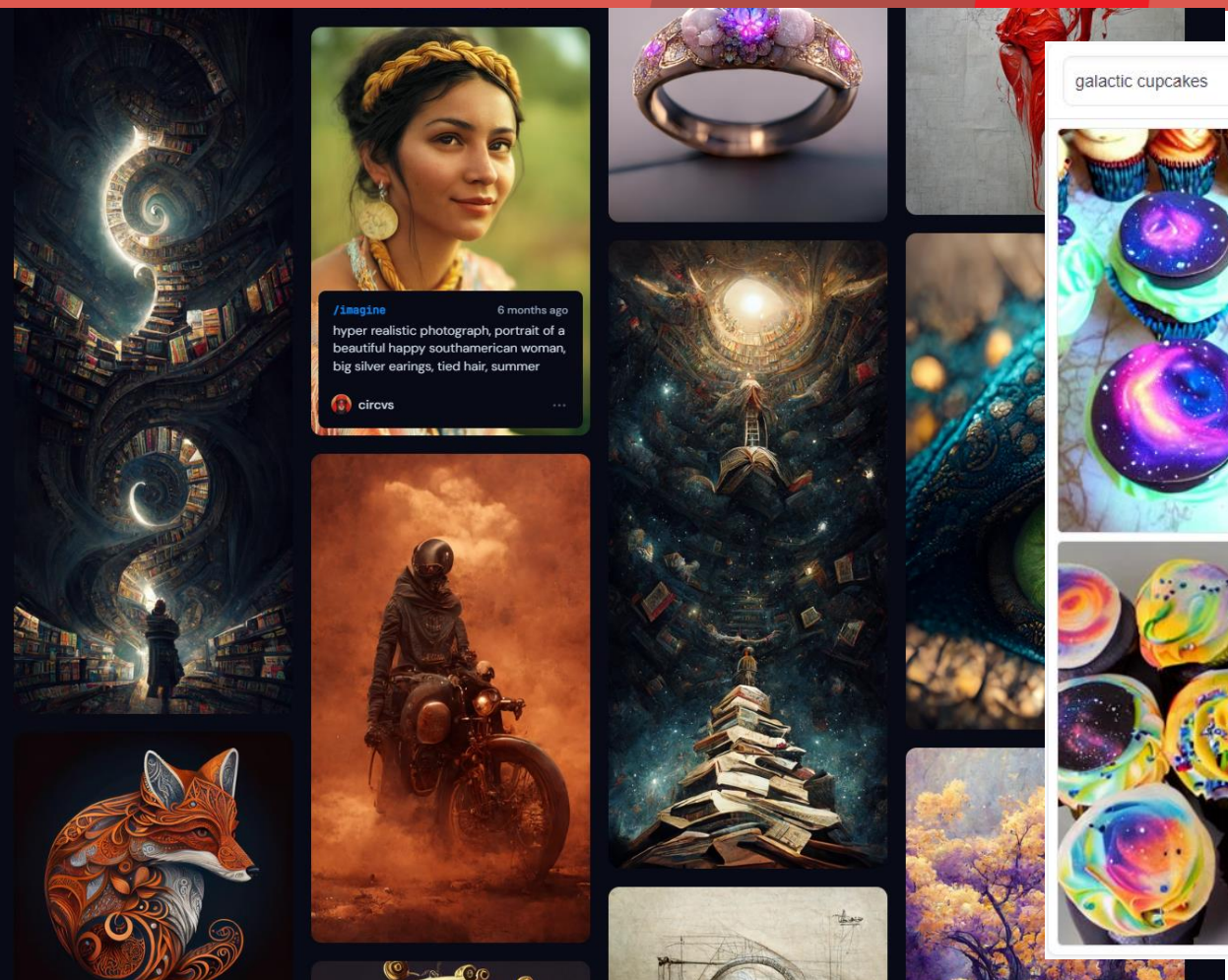
Category	January	February	March	April
Videos	112	96	74	158
Documents	716	518	207	900
Images	2591	1547	1236	1934

alt="Bar chart of files uploaded by month - see table 1 for full text description"

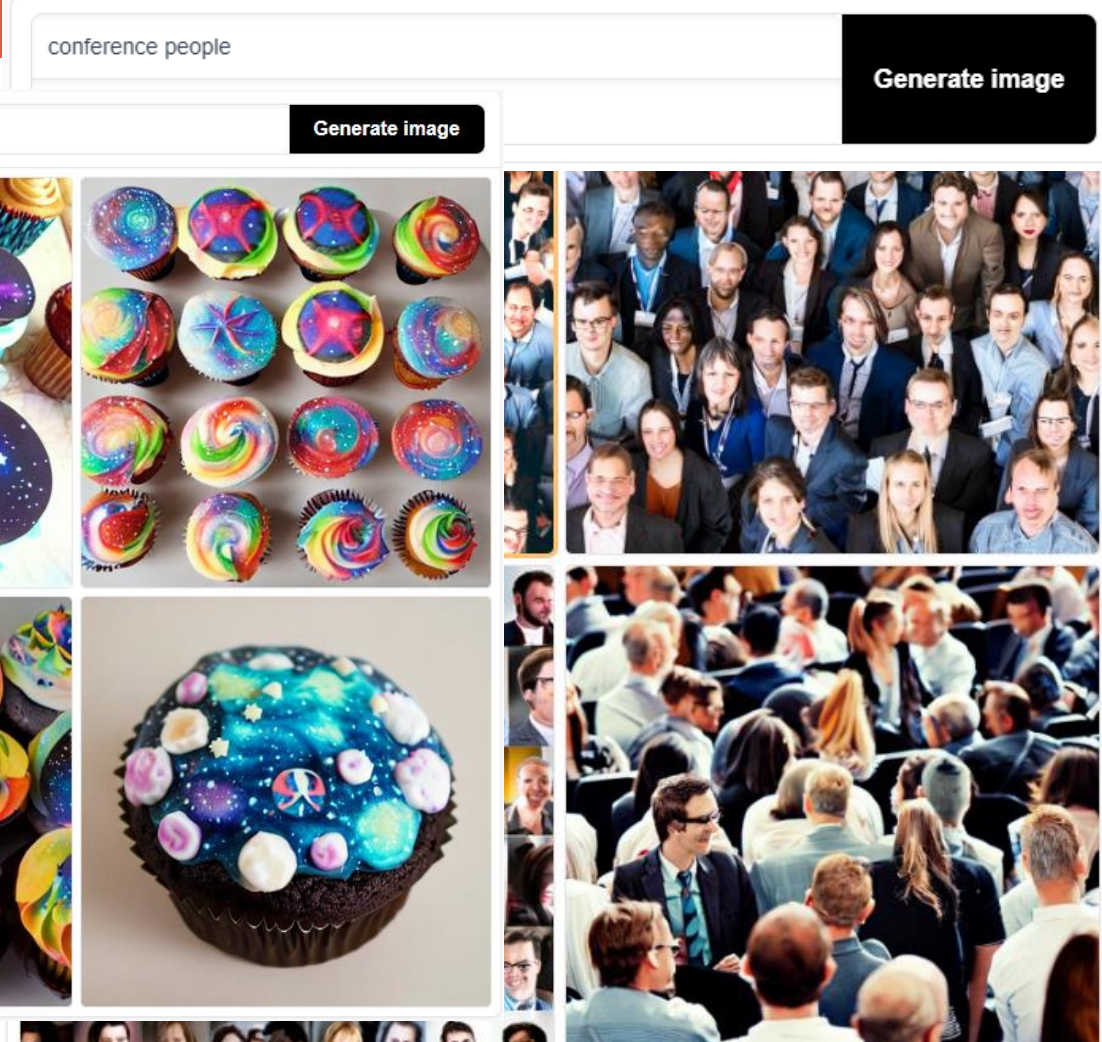
Izvor:

<https://www.boisestate.edu/webguide/2021/02/05/describing-data-and-graphs/>

AI: kreiranje slike iz opisa



/imagine 6 months ago
hyper realistic photograph, portrait of a beautiful happy southamerican woman, big silver earrings, tied hair, summer
cirve



galactic cupcakes

Generate image

Izvor: <https://stablediffusionweb.com/#demo>

Izvor: <https://midjourney.com/showcase/top/>

AI: kreiranje opisa iz slike



Chrome

<https://blog.google/outreach-initiatives/accessibility/get-image-descriptions/>
(ima i za hrvatski jezik)



Edge

<https://blogs.windows.com/msedgedev/2022/03/17/appears-to-say-microsoft-edge-auto-generated-image-labels/>

Preglednici u kombinaciji s čitačima ekrana za slike koje nemaju opise nude automatske opise, korisnicima je naznačeno da je riječ o automatski generiranom opisu (**Appears to say / Apperas to be**)

Chrome + NVDA



NVDA Speech Viewer

Appears to be: an assortment of pastries and cakes
Appears to be: an assortment of pastries and cakes
NVDA Speech Viewer
Appears to be: an assortment of pastries and cakes
Macaroon

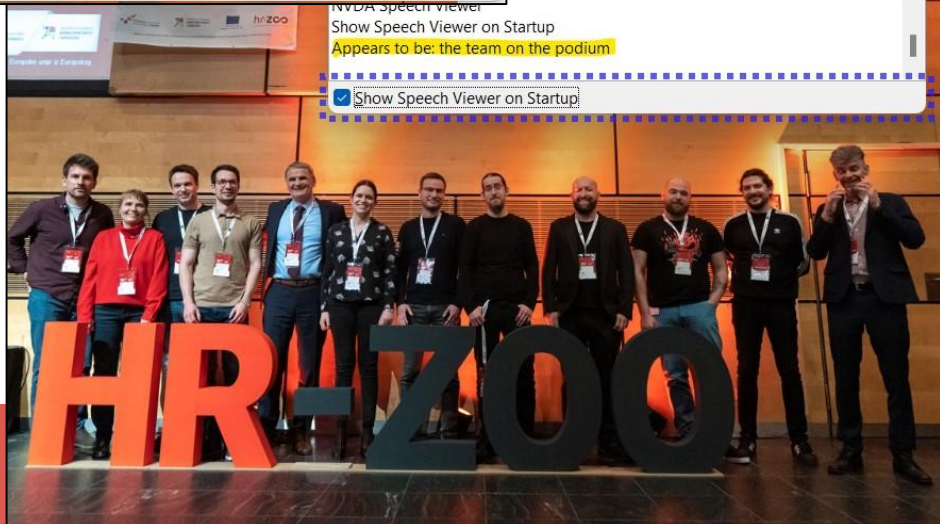
Show Speech Viewer on Startup



NVDA Speech Viewer

Appears to be: person speaking at the event
Convention, Academic conference. Appears to say: Srce DEI
Srce DEI 2022
H

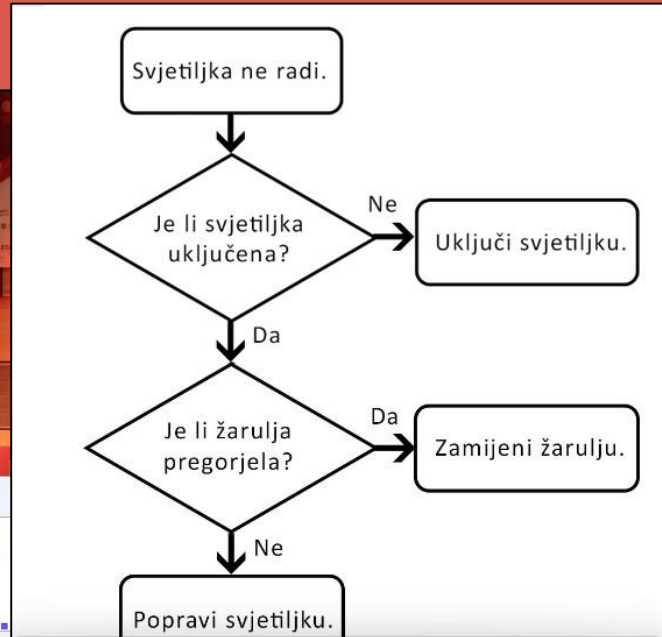
Show Speech Viewer on Startup



NVDA Speech Viewer

Show Speech Viewer on Startup
Appears to be: the team on the podium

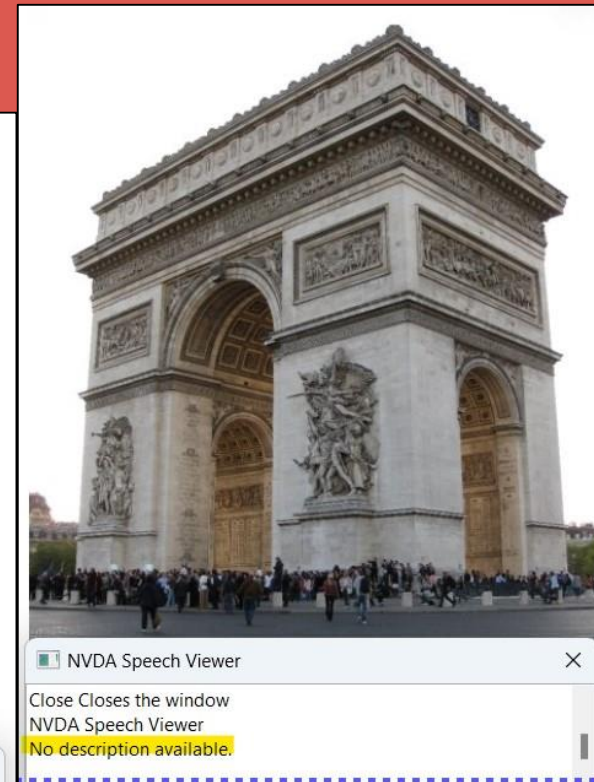
Show Speech Viewer on Startup



NVDA Speech Viewer

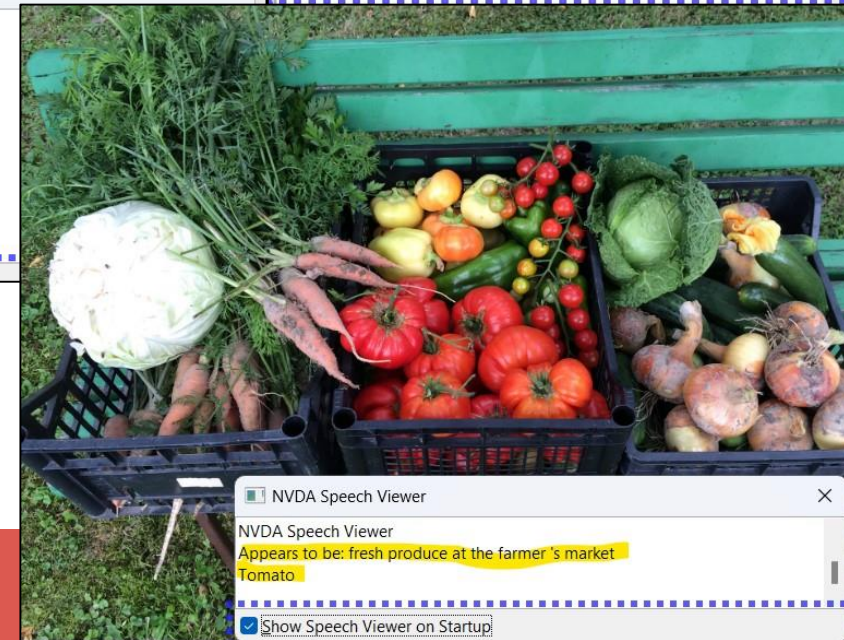
Appears to say: Svjetiljka ne radi .
Je li svjetiljka uključena ?
Da
Je li žarulja pregorjela ?
Ne
Popravi svjetiljku .
Ne
Uključi svjetiljku .
Da
Zamijeni žarulju

Show Speech Viewer on Startup



NVDA Speech Viewer

Close Closes the window
NVDA Speech Viewer
No description available.



NVDA Speech Viewer

NVDA Speech Viewer
Appears to be: fresh produce at the farmer's market
Tomato

Show Speech Viewer on Startup

Korisni linkovi

- <https://www.boisestate.edu/webguide/2021/02/11/creating-accessible-flowcharts/>
- <https://www.boisestate.edu/webguide/category/describing-complex-images/>
- <https://www.w3.org/WAI/tutorials/images/decision-tree/>
- <http://diagramcenter.org/table-of-contents-2.html>



I hvala na pozornosti 😊



Ovo djelo dano je na korištenje pod licencijom *Creative Commons Imenovanje* 4.0 međunarodna.
Licencija je dostupna na stranici: creativecommons.org/licenses/by/4.0/deed.hr.